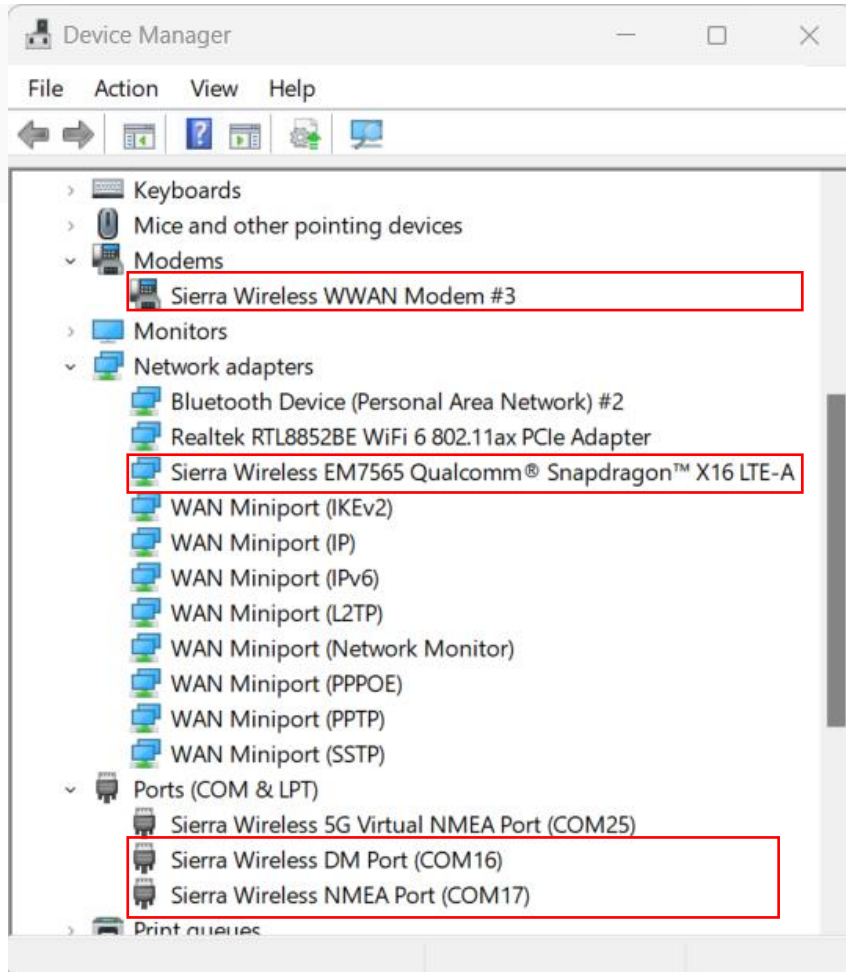


How to Enable/Disable Serial ports for EM74 Series and EM75 Series on Windows?

- Enable serial ports if the ports are hidden.
- Add “USBCOMP=8”, then install the driver.

[Default Values]
FWUPDATE=AUTO
CHECKFORDEVICE=0
LOCATIONDRIVER=1
USBCOMP=8



- Disable serial ports if the ports are shown.
(MBIM net adapter only)
- Don't do anything, then install the driver by default

[Default Values]
FWUPDATE=AUTO
CHECKFORDEVICE=0
LOCATIONDRIVER=1

